



# PT 15

## Noblelift Power Electric Walkie Pallet Truck

### INTRODUCTION

The PT 15 is the economical solution for all medium applications in transporting operations or delivery applications on lorries with tail lifts. It accelerates any occasional order picking operations.

### ADVANTAGES

- Powerful and reliable Noblelift AC drive system.
- Stability through additional stabilizers.
- Maintenance free battery.
- Built-in charger.



**Built-in charger**  
The built-in charger gives higher autonomy during the application.



**Deep discharge protection**  
Battery discharge indicator with automatic lift cut-off function for higher battery lifetime.



**Powerful batteries**  
VRLA-AGM Maintenance free batteries ensure longer operations.



**Ergonomic tiller**  
The ergonomic tiller can be easily operated with either hand. Crawl speed button assist to operate safe in tight areas.



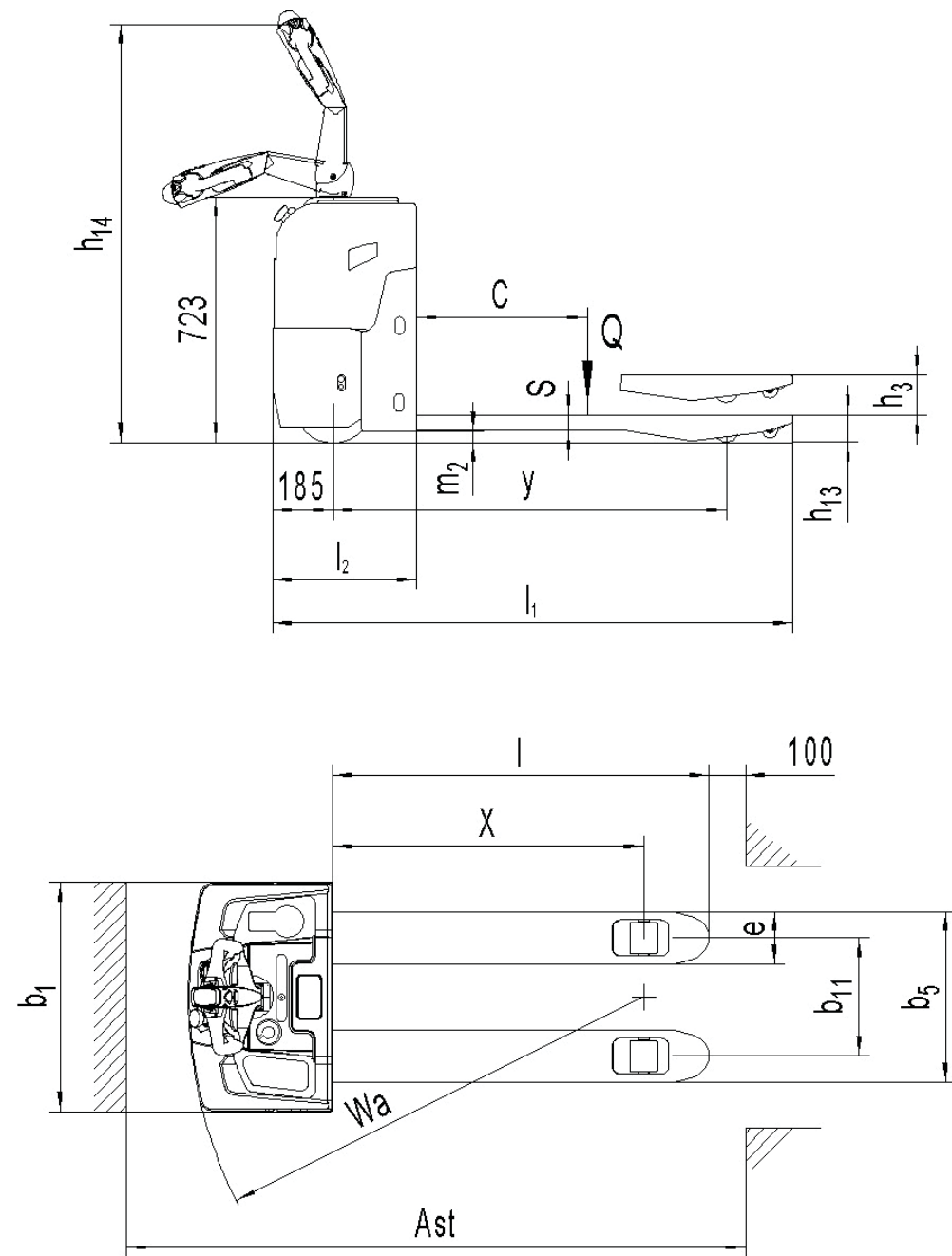
**Stabilizers**  
Stabilizers ensure high driving stability.

**Storage tray**  
Numerous trays for storage such as drinks, cell phone, pen and others.



**Easy to maneuver**  
Short chassis for easy maneuver in tight areas.





# Type sheet for industrial truck acc. to VDI 2198 1KG=2.2LB 1INCH=25.4MM

Distinguishing mark	1.2	Manufacturer's type designation		PT 15	
	1.3	Power (battery ,diesel, petrol, gas, manual)		Battery	
	1.4	Operator type		Pedestrian	
	1.5	Load Capacity / rated load	Q (t)	1.5	
	1.6	Load centre distance	C (mm)	600	
	1.8	Load distance ,centre of drive axle to fork	X(mm)	963	1054
	1.9	Wheelbase	Y (mm)	1217	1310
Weight	2.1	Service weight	kg	285	
	2.2	Axle loading, laden front/ rear	kg	760/1026	674/1112
	2.3	Axle loading, unladen front/rear	kg	222/64	226/60
Tyres, chassis	3.1	Tires		Polyurethane (PU)	
	3.2	Tire size, front	Øx w (mm)	Ø252x89	
	3.3	Tire size, rear	Øx w (mm)	Ø84x70 / Ø84x93	Ø74x70 / Ø74x93
	3.4	Additional wheels(dimensions)	Øx w (mm)	Ø100x40	
	3.5	Wheels, number front/ rear(x=driven wheels)		1x +2/ 2 or 1x +2/ 4	
	3.6	Tread, front	b10 (mm)	500	
	3.7	Tread, rear	b11 (mm)	360	490
Dimensions	4.4	Lift	h3 (mm)	120	
	4.9	Height of tiller in drive position min./ max.	h14 (mm)	920/1250	
	4.15	Height, lowered	h13 (mm)	85	75
	4.19	Overall length	l1 (mm)	1590	1660
	4.20	Length to face of forks	l2 (mm)	440	
	4.21	Overall width	b1 (mm)	700	
	4.22	Fork dimensions	s/e/l (mm)	47 / 160 / 1150 <sup>1)</sup>	47 / 160 /1220
	4.25	Distance between fork-arms	b5 (mm)	520	650
	4.32	Ground clearance, centre of wheelbase	m2 (mm)	34	24
	4.34	Aisle width for pallets 800X1200 lengthways	Ast (mm)	2145	2176
	4.35	Turning radius	Wa (mm)	1480	1550
Performance data	5.1	Travel speed, laden/ unladen	km/h	5.5 / 5.5	
	5.2	Lift speed, laden/ unladen	m/s	0.025 / 0.035	
	5.3	Lowering speed, laden/ unladen	m/s	0.045 / 0.030	
	5.8	Max. gradeability, laden/ unladen	%	5/ 8	
	5.10	Service brake		Electromagnetic	
Electric- Motor	6.1	Drive motor rating S2 60min	kW	0.9	
	6.2	Lift motor rating at S3 5%	kW	0.8	
	6.3	Battery acc. to DIN 43531/ 35/ 36 A, B, C, no		No	
	6.4	Battery voltage, nominal capacity K5	V/ Ah	2x12 / 85	
	6.5	Battery weight	kg	48	
	6.6	Energy consumption acc: to VDI cycle	kWh/h	0.48	
Additional data	8.1	Type of drive control		AC-speed control	
	8.4	Sound level at driver's ear acc. to EN 12053	dB(A)	67	

Note: 1) :optional L=800





# PT E20

## Robust-economic Solution for Medium Applications



### INTRODUCTION

The PT E20 bridges the gap between low-duty and high duty applications.

The truck is the perfect choice if robustness needs to be combined with economics in combination with the request of traction batteries.

### ADVANTAGES

- Combines economy and robustness.
- Noblilift AC- drive system.
- Reliable drive- and fork chassis with steel enclosures.
- Open battery compartment for traction as well as for maintenance free-semi traction batteries.
- Proofed components from international brands.



#### Ergonomic tiller

The ergonomic tiller can be easily operated with either hand. Crawl speed button assist to operate safe in tight areas.

#### AC drive technology

AC drive system for more power, better energy consumption as well as for low maintenance costs.



#### Control elements

Key-switch, emergency switch and battery discharge indicator.



#### Open battery compartment

The solid open battery compartment ensures easy maintenance.



#### Powerful batteries

Liquid acid traction batteries and optional maintenance free- semi traction batteries. (Optional with metal enclosure)

#### US Tailored Battery Compartment

7.9" US tailored battery compartment for 7.5" battery pack or smaller industrial batteries.



#### Typical US-Version fork

Optional typical US-tailored fork-chassis with short fork overhang.



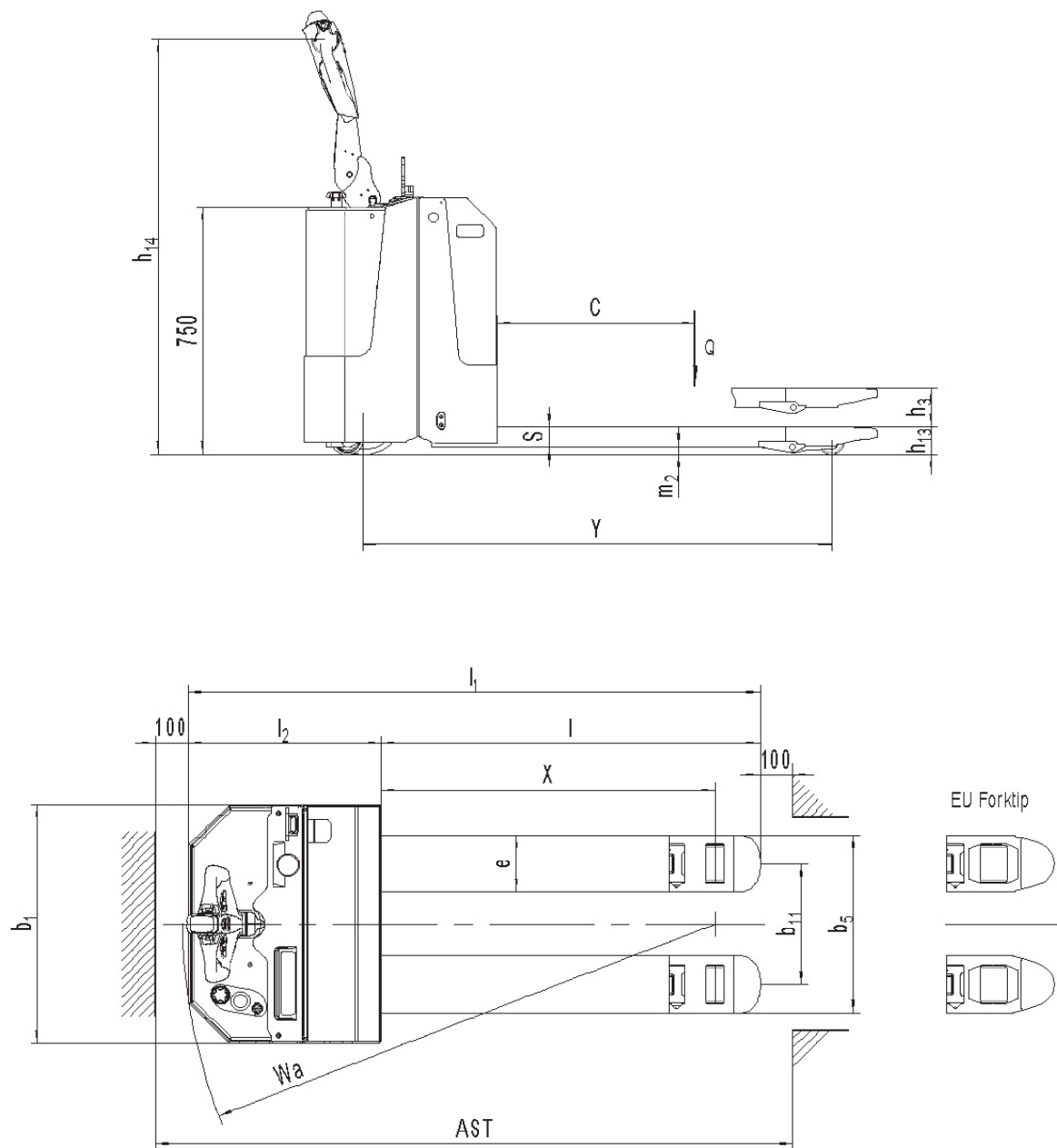
#### Foldable protection

Foldable platform optional available.



buffalo Series





Type sheet for industrial truck acc. to VDI 2198 1KG=2.2LB 1INCH=25.4MM

Distinguishing mark		Manufacturer's type designation		PT E20		PT E20 US	
				Battery		Pedestrian	
	1.2	Power (battery ,diesel, petrol, gas, manual)					
	1.3	Operator type					
	1.4	Load Capacity / rated load	Q (t)	2.0			
	1.5	Load centre distance	C (mm)	600			
	1.6	Load distance ,centre of drive axle to fork	X (mm)	965		1083	
	1.7	Wheelbase	Y (mm)	1372		1490	
Weight	2.1	Service weight	kg	470			
	2.2	Axle loading, laden front/rear	kg	920/1550		1043/1427	
	2.3	Axle loading, unladen front/rear	kg	388/82		394/76	
Tyres, chassis	3.1	Tires		Polyurethane (PU)			
	3.2	Tire size, front	Øx w (mm)	Ø252×88			
	3.3	Tire size, rear	Øx w (mm)	Ø84×85		Ø82×110	
	3.4	Additional wheels(dimensions)	Øx w (mm)	Ø100×40			
	3.5	Wheels,number front/ rear(x=driven wheels)		1x +2/2;+2/4		1x +/-2;+2/2	
	3.6	Tread, front	b10 (mm)	500			
	3.7	Tread, rear	b11 (mm)	367/512			
Dimensions	4.4	Lift	h3 (mm)	120			
	4.9	Height of tiller in drive position min./ max.	h14 (mm)	900/1260			
	4.15	Height, lowered	h13 (mm)	85		83	
	4.19	Overall length	l1 (mm)	1736		1806	
	4.20	Length to face of forks	l2 (mm)	587			
	4.21	Overall width	b1 (mm)	729			
	4.22	Fork dimensions	s/e/l (mm)	60/173/1150		60/173/1220	
	4.25	Distance between fork- arms	b5 (mm)	540/685			
	4.32	Ground clearance, centre of wheelbase	m2 (mm)	25		23	
	4.34	Aisle width for pallets 800X1200 lengthways	Ast (mm)	2234		2303	
	4.35	Turning radius	Wa (mm)	1570		1686	
Performance data	5.1	Travel speed, laden/ unladen	km/h	6.0 /6.0			
	5.2	Lift speed, laden/ unladen	m/s	0.02/0.04			
	5.3	Lowering speed, laden/ unladen	m/s	0.03/0.03			
	5.8	Max. gradeability, laden/ unladen	%	6/10			
	5.10	Service brake		Electromagnetic			
Electric- engine	6.1	Drive motor rating S2 60min	kW	1.3			
	6.2	Lift motor rating at S3 15%	kW	0.8			
	6.3	Battery acc. to DIN 43531/ 35/ 36 A, B, C, no		No,3VBS			
	6.4	Battery voltage, nominal capacity K5	V/ Ah	24V/165Ah			
	6.5	Battery weight	kg	160			
	6.6	Energy consumption acc. to VDI cycle	kWh/h	0.9			
Additional data	8.1	Type of drive control		AC- speed control			
	8.4	Sound level at driver's ear acc. to EN 12053	dB(A)	69			







# PT 20

## Perfect Solution for most Transportation Applications



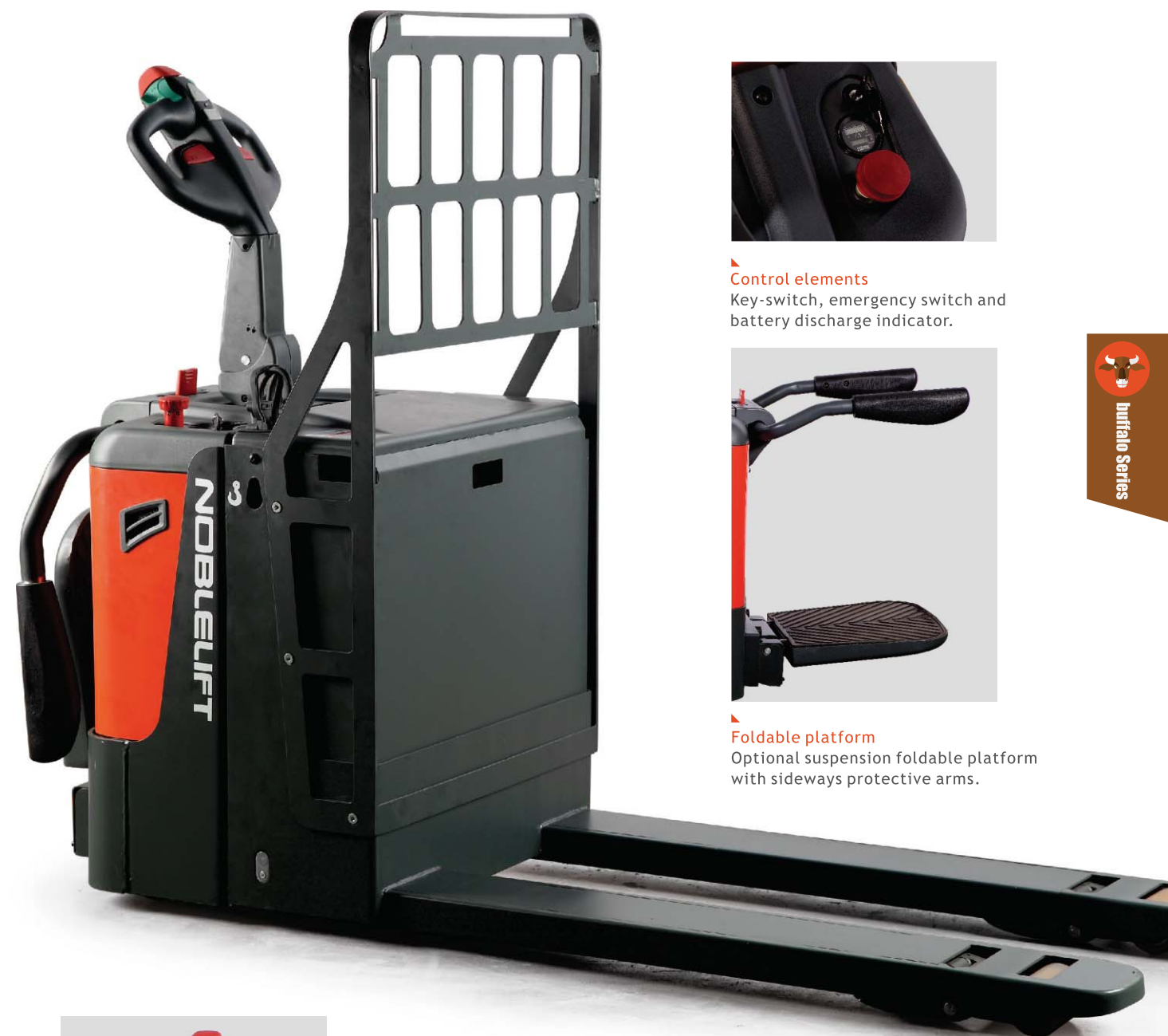
### INTRODUCTION

The PT 20 is the ideal selection for most transportation applications for transporting palletized goods on medium or long distances (option foldable platform).

The AC drive system and the optional EPS - electric steering system ensure high handling capacities.

### ADVANTAGES

- Robust and ergonomic design.
- Noblelift AC- Drive system for enough power.
- Reliable drive- and fork chassis with steel enclosures.
- Optional foldable platform with protective arms.
- Optional Noblelift EPS- electric steering system.
- Proofed components from international brands.



#### Control elements

Key-switch, emergency switch and battery discharge indicator.



#### Foldable platform

Optional suspension foldable platform with sideways protective arms.



#### Ergonomic tiller

The ergonomic tiller can be easily operated with either hand. Crawl speed button assist to operate safe in tight areas.

#### EPS- Electric steering system

The EPS supports the operator during the whole day and makes operations more effortless.



#### Robust design

Solid steel battery and drive chassis enclosure.

#### DIN Battery Compartment or US Tailored Battery Compartment

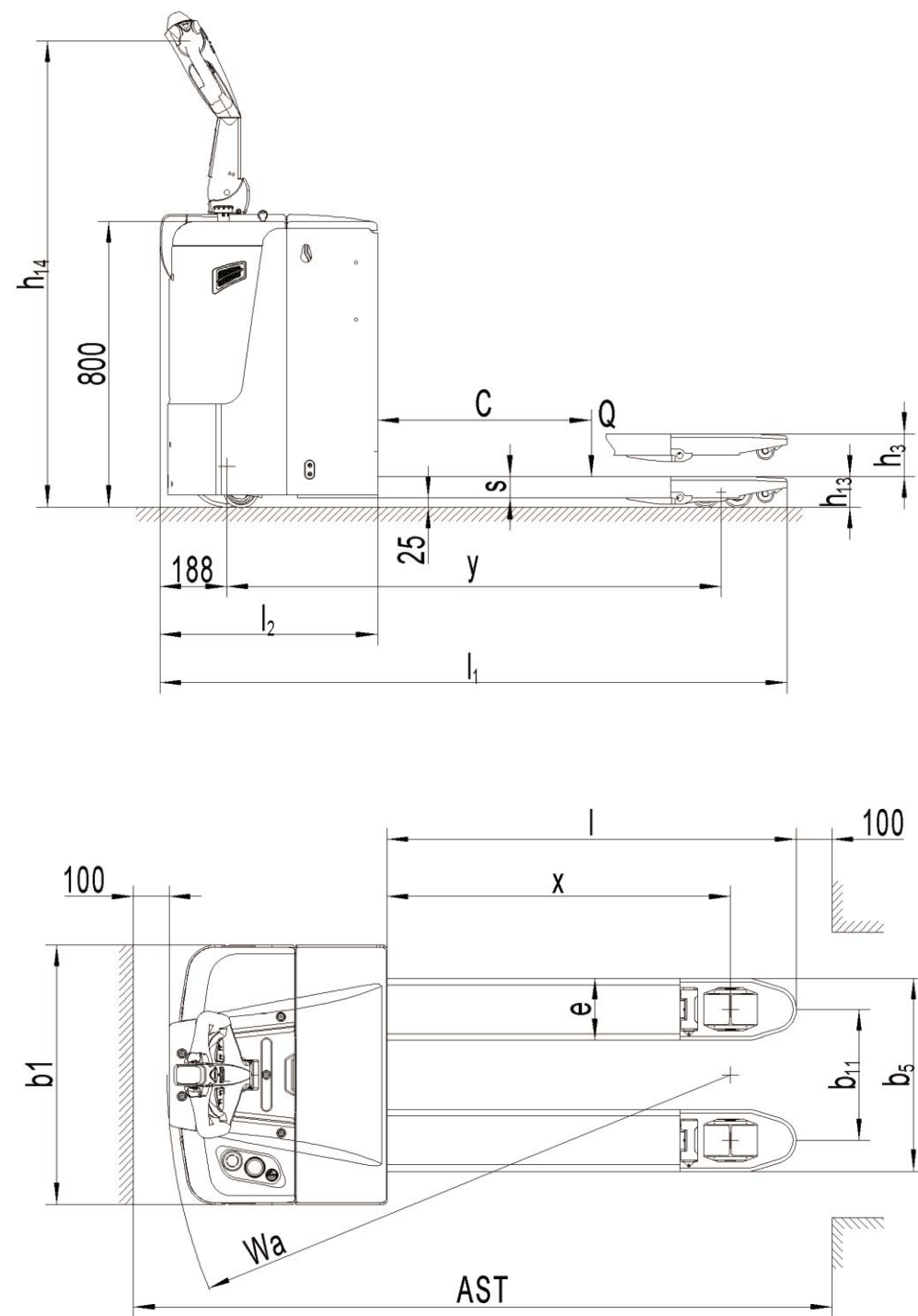
9.1" US tailored battery compartment for US battery packs or other industrial batteries.



#### US-tailored fork chassis

Optional typical US-tailored fork-chassis with short fork overhang.





Type sheet for industrial truck acc. to VDI 2198 1KG=2.2LB 1INCH=25.4MM

Distinguishing mark			PT 20		PT 20 US	
			Battery		Pedestrian (Stand)	
1.2	Manufacturer's type designation					
1.3	Power (battery ,diesel, petrol, gas, manual)					
1.4	Operator type					
1.5	Load Capacity / rated load	Q (t)	2.0			
1.6	Load centre distance	c (mm)	600			
1.8	Load distance ,centre of drive axle to fork	x (mm)	965		1083	
1.9	Wheelbase	y (mm)	1388		1524	
Weight	2.1	Service weight	kg			
	2.2	Axle loading, laden front/rear	kg			
	2.3	Axle loading, unladen front/rear	kg			
Tyres, chassis	3.1	Tires			Polyurethane (PU)	
	3.2	Tire size, front	Øx w (mm)		Ø230×75	
	3.3	Tire size, rear	Øx w (mm)		Ø84×84	
	3.4	Additional wheels(dimensions)	Øx w (mm)		Ø100x40	
	3.5	Wheels,number front/ rear(x=driven wheels)			1 x+2/2;+2/4	
	3.6	Tread, front	b10 (mm)		500	
	3.7	Tread, rear	b11 (mm)		367/512	
Dimensions	4.4	Lift	h3 (mm)		120	
	4.9	Height of tiller in drive position min./ max.	h14 (mm)		946/1338	
	4.15	Height, lowered	h13 (mm)		85	
	4.19	Overall length	l1 (mm)		1762	
	4.20	Length to face of forks	l2 (mm)		612	
	4.21	Overall width	b1 (mm)		729	
	4.22	Fork dimensions	s/e/l (mm)		60/173/1150	
	4.25	Distance between fork- arms	b5 (mm)		540/685	
	4.32	Ground clearance, centre of wheelbase	m2 (mm)		25	
	4.34	Aisle width for pallets 800X1200 lengthways	Ast (mm)		2250	
	4.35	Turning radius	Wa (mm)		1585	
Performance data	5.1	Travel speed, laden/ unladen	km/h		6.0/6.0	
	5.2	Lift speed, laden/ unladen	m/s		0.027/0.035	
	5.3	Lowering speed, laden/ unladen	m/s		0.042/0.027	
	5.8	Max. gradeability, laden/ unladen	%		6/10	
	5.10	Service brake			Electromagnetic	
Electric- Motor	6.1	Drive motor rating S2 60min	kW		1.3	
	6.2	Lift motor rating at S3 15%	kW		0.8	
	6.3	Battery acc. to DIN 43531/ 35/ 36 A, B, C, no			B,2PzS	
	6.4	Battery voltage, nominal capacity K5	V/ Ah		24/210	
	6.5	Battery weight	kg		223	
	6.6	Energy consumption acc. to VDI cycle	kWh/h		0.75	
Additional data	8.1	Type of drive control			AC- Speed Control	
	8.4	Sound level at driver's ear acc. to EN 12053	dB(A)		69	







# PS 10M

## Noblift Power Electric Walkie Stacker for Medium Applications

### INTRODUCTION

The PS 10M based on the same reliable components and design-character as the electric walkie pallet truck PT 15 with monomast for perfect view to the loads. It is the cost-effective solution for all medium stacking applications.

### ADVANTAGES

- Powerful and reliable Noblift AC.
- Ergonomic tiller.
- Stability through additional stabilizers.
- Maintenance free battery.
- Built-in charger.

## PS10M



**Ergonomic tiller**  
The ergonomic tiller can be easily operated with either hand. Crawl speed button assist to operate safe in tight areas.



**Built-in charger**  
The built-in charger gives higher autonomy during the application.



**Reliable instruments**  
Battery discharge indicator with automatic lift cut-off function for higher battery lifetime.



**Deep discharge protection**  
Adjustable straddle leg design, suitable for diverse pallet sizes and more stability.



**Powerful batteries**  
Maintenance free VRLA-AGM batteries ensure longer operations



**Several fork options**  
Several fork- length and width over the forks available

**AC drive technology**  
AC drive system for more power, better energy consumption as well as for low maintenance costs

**Optional straddle leg**  
Stabilizers ensure high driving stability.

**Smart monomast**  
Numerous trays for storage such as drinks, cell phone, pen and others.

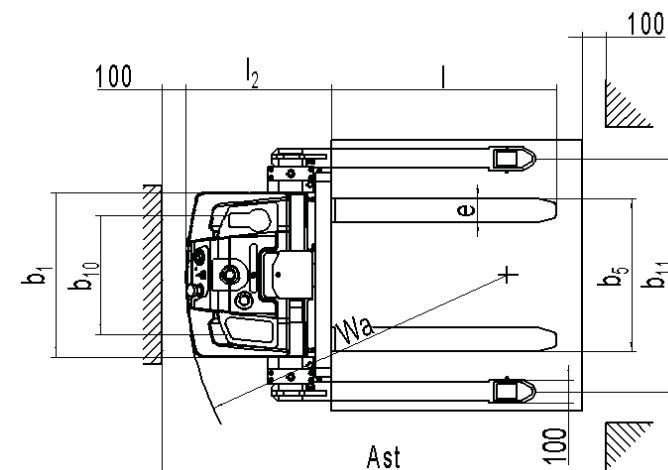
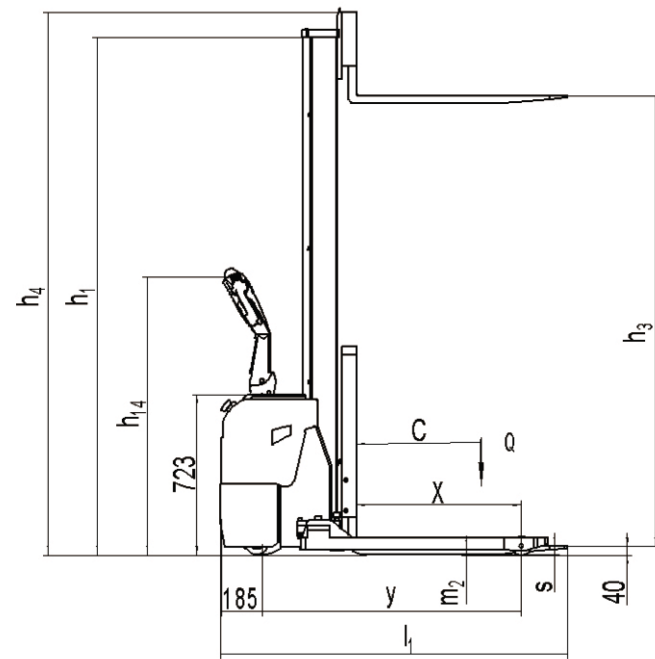
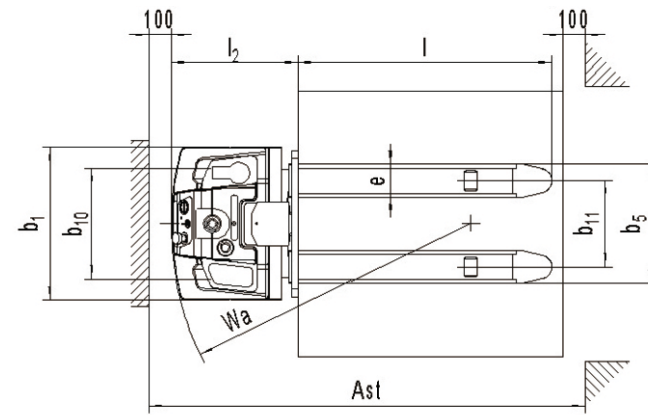
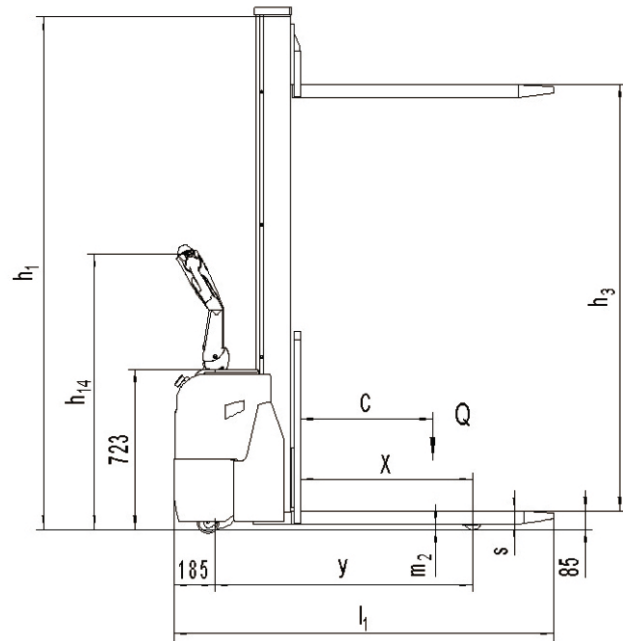


**Easy to maneuver**  
Smart monomast for good view to the forks from both sides.

## PS10MSL







Type sheet for industrial truck acc. to VDI 2198 1KG=2.2LB 1INCH=25.4MM						
Distinguishing mark	1.2	Manufacturer's type designation		PS 10M		PS 10M SL
	1.3	Power (battery ,diesel, petrol, gas, manual)		Battery		Battery
	1.4	Operator type		Pedestrian		Pedestrian
	1.5	Load Capacity / rated load	Q(t)	1.0		1.0
	1.6	Load centre distance	c(mm)	600		600
	1.8	Load distance ,centre of drive axle to fork	x(mm)	782		742
Weight	1.9	Wheelbase	Y(mm)	1170		1170
	2.1	Service weight	kg	536	566	676
	2.2	Axle loading, laden front/rear	kg	850/680	850/710	905/765
Tyres, chassis	2.3	Axle loading, unladen front/rear	kg	320/210	320/240	385/285
	3.1	Tires		Polyurethane (PU)		Polyurethane (PU)
	3.2	Tire size, front	Øx w (mm)	Ø252×89		Ø252×89
	3.3	Tire size, rear	Øx w (mm)	Ø84×70		Ø84×70
	3.4	Additional wheels(dimensions)	Øx w (mm)	Ø100×40		Ø100×40
	3.5	Wheels, number front/rear(x=driven wheels)		1x+2/2		1x+2/2
	3.6	Track, front	b10mm	500		500
Dimensions	3.7	Track, rear	b11 (mm)	390		1000-1370
	4.2	Lowered mast height	h1 (mm)	1970	2370	1970
	4.3	Free Lift height	h2 (mm)	1530	1930	1530
	4.4	Lift height	h3 (mm)	1530	1930	1530
	4.5	Extended mast height	h4 (mm)	1970	2370	2090
	4.9	Height of tiller in drive position min./ max.	h14mm	920/1250		920/1250
	4.15	Height, lowered t	h13mm	85		40
	4.19	Overall length	l1mm	1725		1765
	4.20	Length to face of forks	l2mm	573		613
	4.21	Overall width	b1mm	692		692
	4.22	Fork dimensions	s/e/l (mm)	60/150/1150		35/100/1150
	4.25	Distance between fork-arms	b5 (mm)	540		252/800
	4.32	Ground clearance, centre of wheelbase	m2mm	25		25
	4.33	Aisle width for pallets 1000X1200 crossways	Ast (mm)	2200		2297
	4.34	Aisle width for pallets 800X1200 lengthways	Ast (mm)	2140		2297
Performance data	4.35	Turning radius	Wa (mm)	1360		1360
	5.1	Travel speed, laden/ unladen	km/h	5.5/5.5		5.5/5.5
	5.2	Lift speed, laden/ unladen	m/s	0.076/0.185		0.076/0.185
	5.3	Lowering speed, laden/ unladen	m/s	0.105/0.110		0.105/0.110
	5.8	Max. gradeability, laden/ unladen	%	5/10		5/10
	5.10	Service brake		Electromagnetic		Electromagnetic
Electric- Motor	6.1	Drive motor rating S2 60min	kW	0.9		0.9
	6.2	Lift motor rating at S3 4.5%	kW	1.2		1.2
	6.3	Battery acc. to DIN 43531/35/36 A, B, C, no		No		No
	6.4	Battery voltage, nominal capacity K5	V/Ah	2x12 / 106		2x12 / 106
Additional data	6.6	Energy consumption acc: to VDI cycle	kWh/h	0.8		0.8
	8.1	Type of drive control		AC- speed control		AC- speed control
	8.4	Sound level at driver's ear acc. to EN 12053	dB(A)	67		67





## PS E-Series PS B-Series PS 16W

**Comprehensive Design of Mast  
Versions and Lift Capacities  
for Different Demands**

### PS16W

#### INTRODUCTION

The PS E / PS B-Series and PS 16W for medium stacking operations with capacities up to 1200 kg / 1500kg / 1600kg.

The PS16W with wide mast for high residual lift capacities and perfect view through the mast.

The optional foldable platform with sideways protective arms or the maintenance free batteries for low duty applications makes this truck the ideal assistant.

The powerful AC-drive technology and the CAN-Bus tiller reduces maintenance and increase the overall performance.

#### ADVANTAGES

- Powerful high quality AC drive unit.
- Optional EPS- Electric steering system.
- 3PzS/4PzS battery cells or maintenance free semi-traction batteries.
- On the 1600kg version with higher battery capacity for longer autonomous operations.
- Different mast versions available.
- Robust and ergonomic design with various storage areas.
- Optional foldable platform with protective arms.



Powerful high quality AC drive unit ensures high performance and low maintenance.

Optional EPS- Electric steering system.

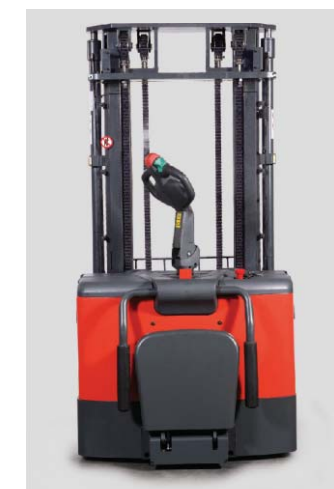
Ergonomic CAN-BUS tiller, for both left-handed and right handed operators.



Key-switch, emergency switch and battery discharge indicator.



Diverse storage areas for stretch foils, documents or clipboards, etc.



Foldable platform for higher flexibility in narrow spaces.

Several mast versions available for PS B-Series with different lifting heights.



High performance 3PzS (4PzS) DIN-standard battery cells for long operations.



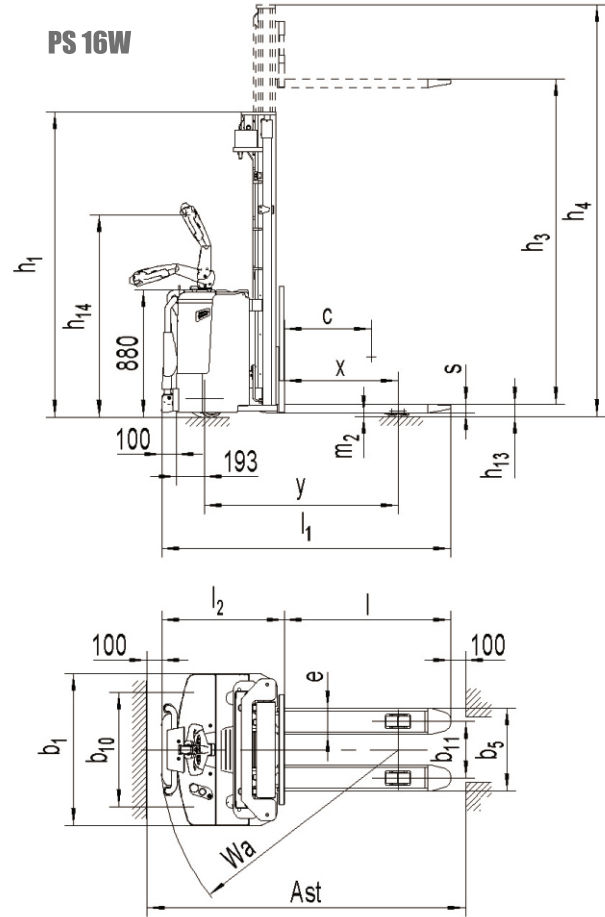
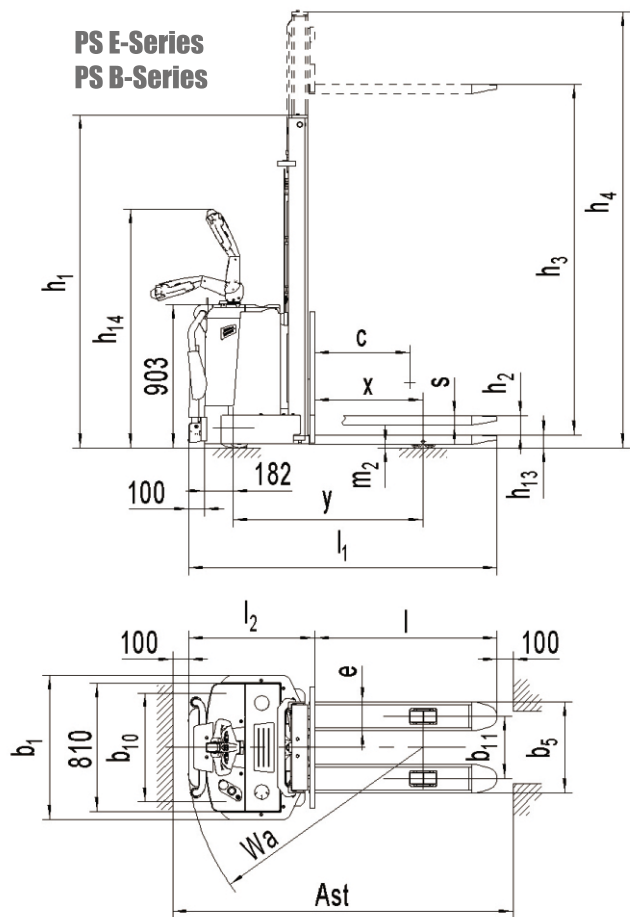
Optional foldable platform with protective arms. The cushioned platforms ensure safety in all travelling conditions.



## PSE-series PSB-series



Mast table PS B12 / PS E12 / PS B15					
Designation	Lowered mast height h1 (mm)	Free lift height h2 (mm)	Lift height h3 (mm)	Lift+fork height h3+h13 (mm)	Extended mast height h4 (mm)
PS B12					
One -stage mast	1976	1519	1519	1600	1976
Two-stage mast	1796	120	2519	2600	2996
	1946	120	2819	2900	3296
	2096	120	3119	3200	3596
	2296	120	3519	3600	3996
Two-stage mast FFL (Full-Free-Lift)	1946	1484	2819	2900	3281
	2096	1634	3119	3200	3581
PS E12					
One -stage mast	1976	1519	1519	1600	1976
Two-stage mast	1796	120	2519	2600	2996
	1946	120	2819	2900	3296
	1946	1484	2819	2900	3281
PS B15					
Two-stage mast Two-stage mast FFL (Full-Free-Lift)	1946	150	2819	2900	3281
	1946	1484	2819	2900	3281
Three-stage mast Three-stage mast FFL (Full-Free-Lift)	1726	—	3319	3400	1939
	1726	1120	3319	3400	3925



Type sheet for industrial truck acc. to VDI 2198 1KG=2.2LB 1INCH=25.4MM						
Distinguishing mark	1.2	Manufacturer`s type designation		PS E12 <sup>1)</sup>	PS B12	PS B15
	1.3	Power (battery ,diesel, petrol gas,manual)		Battery		Battery
	1.4	Operator type		Pedestrian	Pedestrian(stand)	
	1.5	Load Capacity / rated load	Q(t)	1.2	1.5	1.6
	1.6	Load centre distance	c(mm)	600		600
	1.8	Load distance ,centre of drive axle to fork	x(mm)	684		784
	1.9	Wheelbase	Y(mm)	1196		1235
Weight	2.1	Service weight	kg	765	960	1035
	2.2	Axle loading, laden front/rear	kg	685/1280	830/1330	880/1655
	2.3	Axle loading, unladen front/rear	kg	585/180	730/230	780/255
Tyres, chassis	3.1	Tires		Polyurethane (PU)		Polyurethane (PU)
	3.2	Tire size, front	Ø x w (mm)	Ø 252 × 88		Ø 252 × 88
	3.3	Tire size, rear	Ø x w (mm)	Ø 80 × 70		Ø 80 × 70
	3.4	Additional wheels(dimensions)	Ø x w (mm)	Ø 150× 54		Ø 150× 54
	3.5	Wheels, number front/rear(x=driven wheels)		1x+2 / 4		1x+2 / 4
	3.6	Tread, front	b10mm	686		790
	3.7	Tread, rear	b11 (mm)	390/ 505		390/ 505
Dimensions	4.2	Lowered mast height	h1 (mm)	1946	2096	1946
	4.3	Free Lift height	h2 (mm)	120	150	-
	4.4	Lift	h3 (mm)	2819 <sup>2)</sup>	3119 <sup>3)</sup>	2819 <sup>4)</sup>
	4.5	Extended mast height	h4 (mm)	3296	3596	3281
	4.9	Height of tiller in drive position min./ max.	h14mm	985/ 1420		961/ 1396
	4.15	Height, lowered	h13mm	81		85
	4.19	Overall length	l1(mm)	1846	1846 / 1946	1883/1983
	4.20	Length to face of forks	l2(mm)	695	695/795	733/833
	4.21	Overall width	b1(mm)	810	910	1050
	4.22	Fork dimensions	s/ e/ l(mm)	60/180/1150		60/180/1150
	4.25	Distance between fork- arms	b5 (mm)	570/ 685		570/ 685
	4.32	Ground clearance, centre of wheelbase	m2(mm)	26	21	25
	4.33	Aisle width for pallets 1000X1200 crossways	Ast (mm)	2320	2320/2420	2360/2460
	4.34	Aisle width for pallets 800X1200 lengthways	Ast (mm)	2215	2215/2315	2250/2350
	4.35	Turning radius	Wa (mm)	1400	1400/1500	1440/1540
Performance data	5.1	Travel speed, laden/ unladen	km/h	6.0/ 6.0		6.0 / 6.0
	5.2	Lift speed, laden/ unladen	m/s	0.105/0.15		0.10/0.16
	5.3	Lowering speed, laden/ unladen	m/s	0.13/0.11		0.095/0.12
	5.8	Max. gradeability, laden/ unladen	%	6 / 12		6 / 12
	5.1	Service brake		Electromagnetic		Electromagnetic
Electric- Motor	6.1	Drive motor rating S2 60min	kW	1.3		1.3
	6.2	Lift motor rating at S3 15%	kW	2.2	3.0	3.0
	6.3	Battery acc. to DIN43 531/35/36 A,B,C,no		No,not DIN	No,cells 3PZS	No,cells 4PZS
	6.4	Battery voltage, nominal capacity K51)	V/Ah	2×12 / 90	24 / 210	24 / 280
	6.5	Battery weight	kg	65	200	250
	6.6	Energy consumption acc. to VDI cycle	kWh/h	1.4	2.5	2.5
Additional data	8.1	Type of drive control		AC- Speed Control		AC- Speed Control
	8.4	sound level at driver`s ear acc. to EN 12053	dB(A)	< 70		< 70

1 ) No platform available, no EPS available 2 ) Optional 1519mm,2519mm 3 ) Optional 1519mm, 2519mm, 2819mm, 3519mm 4 ) Optional 2819mm,3319mm with full free lift(FFL)







## PS 15 / PS 15SL

### The Electric Walkie Pallet Truck



**PS 15  
Narrow type**

#### INTRODUCTION

The PS15-Series ensures with high performance through AC drive technology in intensive stacking operations with capacities up to 3300lbs(1500kg) with 2- and 3-stage masts.

The optional available foldable platform is the best choice if the truck is used in larger warehouse with longer travelling distances.

#### ADVANTAGES

- High capacity of 3300lbs(1500kg).
- Nobelift AC drive system.
- Electric steering (optional).
- Robust 2- and 3stage masts for lift heights up to 6000mm lift height.
- Foldable platform and protective arms (optional).



Key-switch, emergency switch and battery discharge indicator.

**PS 15SL  
Straddle-leg type**



**Tiller**

All operating elements on the CAN tiller are easy to reach.

**Nobelift AC drive system**

The AC drive system gives high performance, ensures low maintenance costs and its high efficiency, saves energy for longer operations.

**Optional straddle leg**

Adjustable straddle leg design, suitable for diverse pallet sizes and more stability.



**Standard battery**

Long operating time through high capacity with 3 PZS battery.



**Storage tray**

The robust battery cover to with storage areas for utilities or packaging and stretch foil.

**Electric steering (optional)**

The electric steering makes the operating effortless. Maneuvering in narrow spaces becomes with the electric steering easiest.

**Different mast versions**

2- stage and 3-stage masts up to 236inch lift-height.

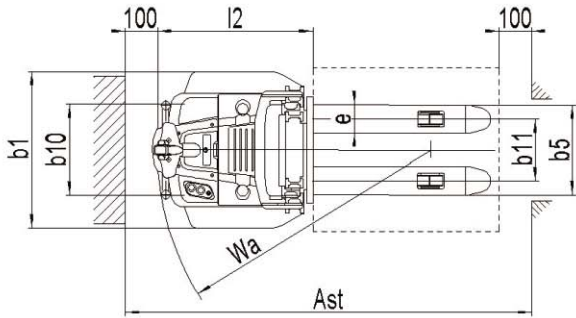
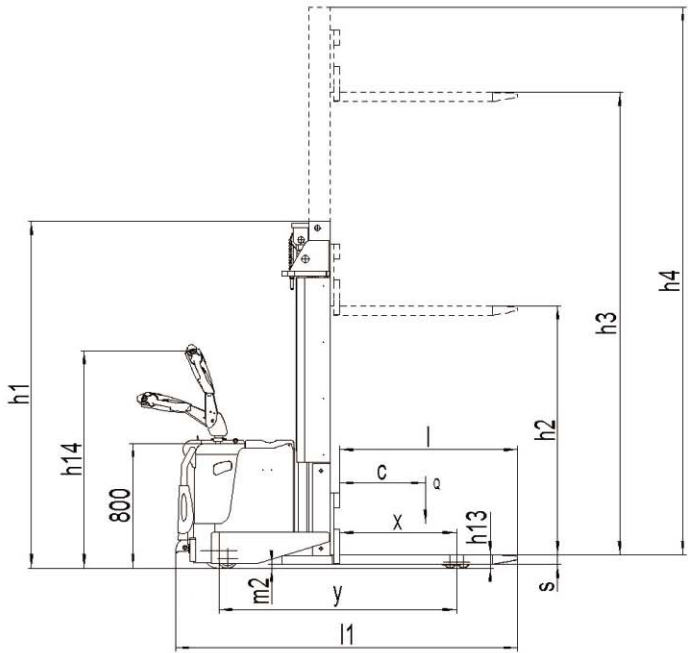


**Optional foldable platform**

Optional suspension foldable platform with sideways protective arms. The ergonomically designed foldable platform in combination with its sideways protective arms makes operations faster and safer.



Mast table PS 15					
Designation	Lowered mast height h1 (mm)	Free lift height h2 (mm)	Lift height h3 (mm)	Extended mast height h4 (mm)	Lift+fork height h3+h13 (mm)
PS 15					
Two-stage mast	1950	150	2815	3370	2900
	2100	150	3115	3670	3200
	2300	150	3515	4070	3600
	2500	150	3915	4470	4000
Two-stage mast FFL (Full-Free-Lift)	1950	1480	2815	3370	2900
	2300	1830	3515	4070	3600
Three-stage mast FFL (Full-Free-Lift)	1980	1420	4215	4865	4300
	2080	1520	4515	5115	4600
	2220	1660	4915	5520	5000
	2475	1875	5415	6060	5500
	2740	2100	5915	6600	6000

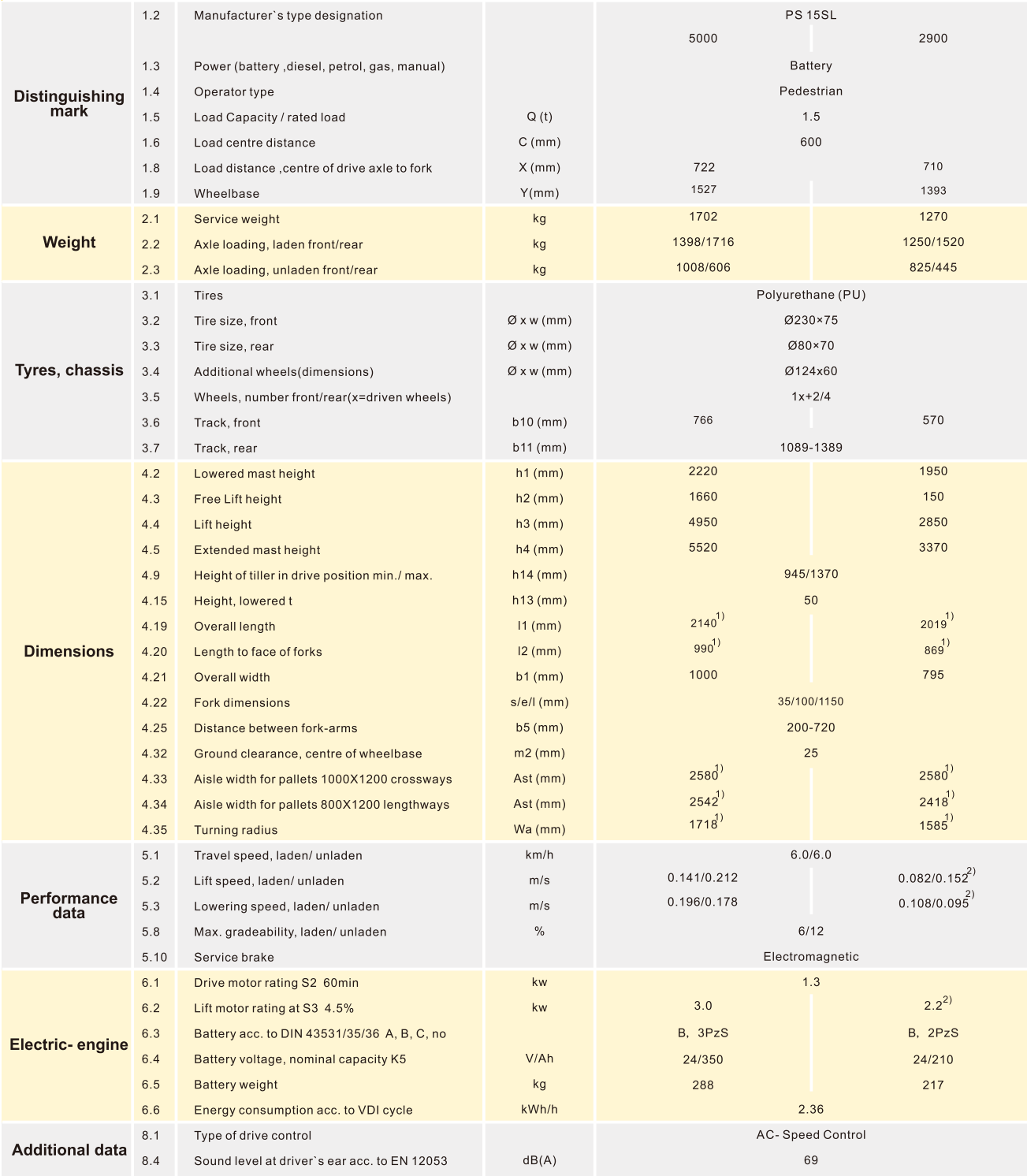


PS 15 Type sheet for industrial truck acc. to VDI 2198 1KG=2.2LB 1INCH=25.4MM					
Distinguishing mark	1.2	Manufacturer's type designation		PS 15	
				5000	2900
	1.3	Power (battery ,diesel, petrol, gas, manual)		Battery	
	1.4	Operator type		Pedestrian	
	1.5	Load Capacity / rated load	Q (t)	1.5	
	1.6	Load centre distance	C (mm)	600	
Weight	1.8	Load distance ,centre of drive axle to fork	X (mm)	751	755
	1.9	Wheelbase	Y (mm)	1526	1407
	2.1	Service weight	kg	1596	1095
Tyres, chassis	2.2	Axle loading, laden front/rear	kg	1345/1663	1165/1430
	2.3	Axle loading, unladen front/rear	kg	955/553	735/360
	3.1	Tires		Polyurethane (PU)	
Dimensions	3.2	Tire size, front	Ø x w (mm)	Ø230×75	
	3.3	Tire size, rear	Ø x w (mm)	Ø 80× 70	
	3.4	Additional wheels(dimensions)	Ø x w (mm)	Ø124x60	
	3.5	Wheels, number front/rear(x=driven wheels)		1x+2/4	
	3.6	Tread, front	b10 (mm)	766	570
	3.7	Tread, rear	b11 (mm)	390/505	
	4.2	Lowered mast height	h1 (mm)	2220	1950
	4.3	Free lift height	h2 (mm)	1660	150
	4.4	Lift	h3 (mm)	4915	2815
	4.5	Extended mast height	h4 (mm)	5520	3370
	4.9	Height of tiller in drive position min./ max.	h14 (mm)	945/1370	
	4.15	Height, lowered	h13 (mm)	85	
	4.19	Overall length	l1 (mm)	2110 <sup>1)</sup>	1987 <sup>1)</sup>
	4.20	Length to face of forks	l2 (mm)	960 <sup>1)</sup>	837 <sup>1)</sup>
	4.21	Overall width	b1 (mm)	1000	795
Performance data	4.22	Fork dimensions	s/e/l (mm)	60/180/1150	
	4.25	Distance between fork- arms	b5 (mm)	570/685 <sup>3)</sup>	
	4.32	Ground clearance, centre of wheelbase	m2 (mm)	25	
	4.33	Aisle width for pallets 1000X1200 lengthways	Ast (mm)	2567 <sup>1)</sup>	2447 <sup>1)</sup>
	4.34	Aisle width for pallets 800X1200 lengthways	Ast (mm)	2519 <sup>1)</sup>	2397 <sup>1)</sup>
	4.35	Turning radius	Wa (mm)	1717 <sup>1)</sup>	1598 <sup>1)</sup>
Electric- engine	5.1	Travel speed, laden/unladen	Km/h	6.0/6.0	
	5.2	Lift speed, laden/ unladen	m/s	0.14/0.212	0.082/0.152 <sup>2)</sup>
	5.3	Lowering speed, laden/ unladen	m/s	0.196/0.178	0.108/0.095 <sup>2)</sup>
	5.8	Max. gradeability performance, laden/ unladen	%	6/12	
	5.10	Service brake		Electromagnetic	
Additional data	6.1	Drive motor rating S2 60min	kW	1.3	
	6.2	Lift motor rating at S3 15%	kW	3.0	2.2 <sup>2)</sup>
	6.3	Battery acc. to DIN 43531/35/36 A, B, C, no		B,3PzS	B,2PzS
	6.4	Battery voltage, nominal capacity K5	V/Ah	24/350	24/210
	6.5	Battery weight	kg	288	217
	6.6	Energy consumption acc. to VDI cycle	kWh/h	2.36	
	8.1	Type of drive control		AC- Speed Control	
	8.4	Sound level at driver's ear according to EN 12053	dB(A)	69	

1)With foldable platform the following dimensions increase: l1+83mm/ l2+83mm/Wa+93mm/Ast+93mm.  
2)For two-stage mast truck with lifting height 2900mm, other two-stage mast truck(仅对于提升2900mm的二门架车型，其余二门架车型)：  
Lift speed-laden/ unladen=0.150/0.226m/s，Lowering speed-laden/ unladen=0.168/0.155 m/s，Lift motor=3.0kw.  
3)6000 height only has 685 specification.



Designation	Lowered mast height h1 (mm)	Free lift height h2 (mm)	Lift height h3 (mm)	Extended mast height h4(mm)	Lift+fork height h3+h13(mm)
PS 15SL					
Two-stage mast	1950	150	2850	3370	2900
	2100	150	3150	3670	3200
	2300	150	3550	4070	3600
	2500	150	3950	4470	4000
Two-stage mast FFL (Full-Free-Lift)	1950	1480	2850	3370	2900
	2300	1830	3550	4070	3600
Three-stage mast FFL (Full-Free-Lift)	1980	1420	4250	4865	4300
	2080	1520	4550	5115	4600
	2220	1660	4950	5520	5000
	2475	1875	5450	6060	5500
	2740	2100	5950	6600	6000



Lift speed-laden/ unladen=0.150/0.226m/s, Lowering speed-laden/ unladen=0.168/0.155 m/s, Lift motor=3.0kw.





## INTRODUCTION

The heavy duty PS20- Series ensures with its robust design and high performance through AC drive technology in intensive stacking operations with capacities up to 2000kg/4400lbs with 2-stage masts lift to 2600/2900/3600mm.

The optional available foldable platform is the best choice if the truck which is for applications in larger warehouse with longer traveling distances.

- High capacity of 2000kg/4400lbs. Noblelift AC drive system.
- Electric steering (optional).
- Foldable platform and protective arms (optional).
- Other advantages and features please see catalog page of PS15/PS15SL.

## CAN-BUS

### CANBUS technology

The CANBUS technology is due to less wiring more reliable.

For maintenance the CANBUS technology makes analysis and adjustments easier so that the downtime is lower than for trucks without CANBUS.

Digital signals further makes parts longer lasting than analogue signals.



Key-switch, emergency switch and battery discharge indicator.



**Standard battery**  
Long operating time through high capacity with 3 PZS battery.



**Tiller**  
All operating elements on the CAN tiller are easy to reach.

**Noblelift AC drive system**  
The AC drive system gives high performance, ensures low maintenance costs and its high efficiency, saves energy for longer operations.



**Storage tray**  
The robust battery cover to with storage areas for utilities or packaging and stretch foil.

**Electric steering (optional)**  
The electric steering makes the operating effortless. Maneuvering in narrow spaces becomes with the electric steering easiest.



**Optional foldable platform**  
Optional suspension foldable platform with sideways protective arms. The ergonomically designed foldable platform in combination with its sideways protective arms makes operations faster and safer.

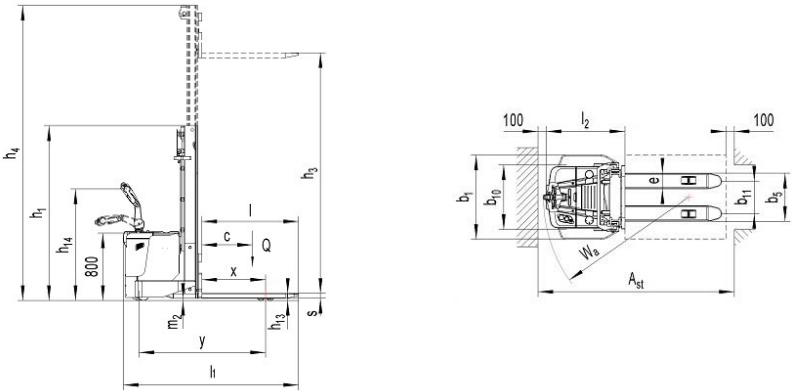






Type sheet for industrial truck acc. to VDI 2198 1tKG=2.2tLB 1INCH=25.4MM						
Distinguishing mark	1.2	Manufacturer`s type designation		2600	PS 20 2900	3600
	1.3	Power (battery ,diesel, petrol, gas, manual)			Battery	
	1.4	Operator type			Pedestrian	
	1.5	Load Capacity / rated load	Q(t)		2	
	1.6	Load centre distance	c(mm)		600	
	1.8	Load distance ,centre of drive axle to fork	x(mm)		760	
	1.9	Wheelbase	Y(mm)		1508	
Weight	2.1	Service weight	kg	1440	1460	1515
	2.2	Axle loading, laden front/rear	kg	1245/2195	1250/2210	1270/2245
	2.3	Axle loading, unladen front/rear	kg	1020/420	1030/430	1070/445
Tires, chassis	3.1	Tires		Polyurethane (PU)		
	3.2	Tire size, front	Øx w (mm)	Ø230×75		
	3.3	Tire size, rear	Øx w (mm)	Ø84×70		
	3.4	Additional wheels(dimensions)	Øx w (mm)	Ø124×60		
	3.5	Wheels, number front/rear(x=driven wheels)		1x+2/4		
	3.6	Track, front	b10mm	766		
	3.7	Track, rear	b11 (mm)	400/515		
Dimensions	4.2	Lowered mast height	h1 (mm)	1930	2080	2430
	4.3	Free Lift height	h2 (mm)	-	-	-
	4.4	Lift height	h3 (mm)	2515	2815	3515
	4.5	Extended mast height	h4 (mm)	3187.5	3487.5	4187.5
	4.9	Height of tiller in drive position min./ max.	h14mm	945/1370		
	4.15	Height, lowered t	h13mm	85		
	4.19	Overall length	l1mm	2083 <sup>1)</sup>		
	4.20	Length to face of forks	l2mm	933 <sup>1)</sup>		
	4.21	Overall width	b1mm	1000		
	4.22	Fork dimensions	s/e/l (mm)	60/185/1150		
	4.25	Distance between fork-arms	b5 (mm)	570/685		
	4.32	Ground clearance, centre of wheelbase	m2mm	25		
	4.33	Aisle width for pallets 1000X1200 crossways	Ast (mm)	2572 <sup>1)</sup>		
	4.34	Aisle width for pallets 800X1200 lengthways	Ast (mm)	2520 <sup>1)</sup>		
	4.35	Turning radius	Wa (mm)	1725 <sup>1)</sup>		
Performance data	5.1	Travel speed, laden/ unladen	km/h	6.0/6.0		
	5.2	Lift speed, laden/ unladen	m/s	0.11/0.16		
	5.3	Lowering speed, laden/ unladen	m/s	0.125/0.125		
	5.8	Max. gradeability, laden/ unladen	%	6/12		
	5.10	Service brake		Electromagnetic		
Electric- engine	6.1	Drive motor rating S2 60min	kW	1.3		
	6.2	Lift motor rating at S3 4.5%	kW	3.0		
	6.3	Battery acc. to DIN 43531/35/36 A, B, C, no		B, 3PzS		
	6.4	Battery voltage, nominal capacity K5	V/Ah	24/350 (24/270) <sup>2)</sup>		
	6.5	weight +/-5%	kWh/h	288		
	6.6	Energy consumption acc: to VDI cycle		2.83		
Additional data	8.1	Type of drive control		AC-speed control		
	8.4	Sound level at driver`s ear acc. to EN 12053	dB(A)	69		

1)With foldable platform the following dimensions increase:l1 l2=+80mm/ Wa=+75mm/ Ast=+75mm  
2) Standard configuration 350Ah, option 270Ah







## PS 20D

**Electric Pedestrian Stacker  
with support arm lift and  
combined capacity of  
2000kg**



### INTRODUCTION

The PS 20D is the first choice for stacking and retrieving goods with lift heights up to 4000mm.

With the feature, the support arm lift, the truck doubles the handling capacity by simultaneously transporting two pallets in comparison to single pallet transportation.

The PS 20D ensures safe operations on uneven floors, ramps or docks. With the flip down platform and the protective side arms the truck gives ergonomics on longer distances.

- Mast and support arm lift for high handling capacity.
- Maintenance free AC Drive Motor
- Ergonomic and reliable design
- With ride on flip down platform and side arms

### CAN-BUS

#### CANBUS technology

The CANBUS technology is due to less wiring more reliable. For maintenance the CANBUS technology makes analysis and adjustments easier so that the downtime is lower than for trucks without CANBUS. Digital signals further makes parts longer lasting than analogue signals.



#### Storage tray

The robust battery cover to with storage areas for utilities or packaging and stretch foil.

#### Electric steering (optional)

The electric steering makes the operating effortless. Maneuvering in narrow spaces becomes with the electric steering easiest.

#### Optional foldable platform

Optional suspension foldable platform with sideways protective arms. The ergonomically designed foldable platform in combination with its sideways protective arms makes operations faster and safer.

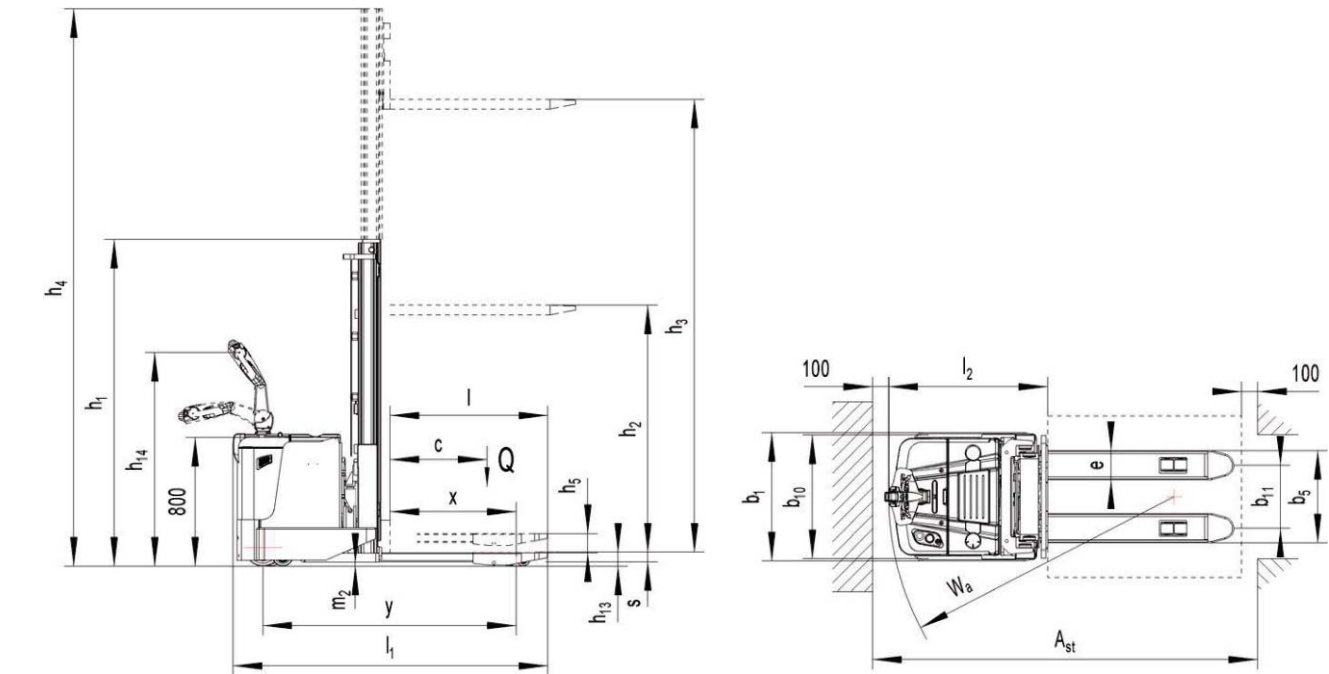


#### Support Arm Lift

In particular through the 2nd lifting mechanism the truck can operate double deck pallet transportation which doubles the handling capacity. At the same time the truck can overcome obstacles as ramps, docks or uneven floors better than standard stackers.







Type sheet for industrial truck acc. to VDI 2198				1KG=2.2LB 1INCH=25.4MM							
Distinguishing mark	1.2	Manufacturer's type designation		PS 20D							
	1.3	Power (battery ,diesel, petrol, gas, manual)		1750	2700FFL	2900	2900FFL	3200	3600	3600FFL	4000
	1.4	Operator type		Battery							
	1.5	Load Capacity / rated load		Pedestrian							
	1.5	Load Capacity / rated load (mast lift)	Q(t)	1.2 <sup>1)</sup>							
	1.6	Load Capacity / rated load (support arm lift)		2 <sup>2)</sup>							
	1.6	Load centre distance	c(mm)	600							
	1.8	Load distance ,centre of drive axle to fork	x(mm)	957							
1.9	Wheelbase	Y(mm)	1681								
Weight	2.1	Service weight	kg	1220	1295	1285	1305	1295	1315	1335	1345
	2.2	Axle loading, laden front/rear	kg	1070/2150	1105/2190	1095/2190	1105/2200	1100/2195	1105/2210	1110/2225	1115/2230
	2.3	Axle loading, unladen front/rear	kg	900/320	960/335	950/335	960/345	955/340	970/345	985/350	995/350
Tires, chassis	3.1	Tires		Polyurethane (PU)							
	3.2	Tire size, front	Øx w (mm)	Φ230×75							
	3.3	Tire size, rear	Øx w (mm)	Φ80×70							
	3.4	Additional wheels(dimensions)	Øx w (mm)	Φ124x60							
	3.5	Wheels, number front/rear(x=driven wheels)		1x+2/4							
	3.6	Track, front	b10mm	570							
	3.7	Track, rear	b11 (mm)	395/505							
Dimensions	4.2	Lowered mast height	h1 (mm)	1454	1927	2027	2027	2177	2377	2377	2577
	4.3	Free Lift height	h2 (mm)	150	1380	150	1480	150	150	1830	150
	4.4	Lift height	h3 (mm)	1660	2615	2815	2815	3115	3515	3515	3915
	4.5	Extended mast height	h4 (mm)	2224	3247	3447	3447	3747	4147	4147	4547
	4.6	Height of tiller in drive position min./ max.	h5(mm)	120							
	4.9	Height, lowered t	h14mm	945/1370							
	4.15	Lowered mast height	h13mm	88							
	4.19	Overall length	l1mm	2055 <sup>2)</sup>							
	4.20	Length to face of forks	l2mm	905 <sup>2)</sup>							
	4.21	Overall width	b1mm	795							
	4.22	Fork dimensions	s/e/l (mm)	60/180/1150							
	4.25	Distance between fork-arms	b5 (mm)	575/685							
	4.32	Ground clearance, centre of wheelbase	m2mm	28							
	4.33	Aisle width for pallets 1000X1200 crossways	Ast (mm)	2269 <sup>2)</sup>							
	4.34	Aisle width for pallets 800X1200 lengthways	Ast (mm)	2536 <sup>2)</sup>							
4.35	Turning radius	Wa (mm)	1867 <sup>2)</sup>								
Performance data	5.1	Travel speed, laden/ unladen	km/h	6.0/6.0							
	5.2	Lift speed, laden/ unladen	m/s	0.08/0.15							
	5.3	Lift speed, laden/ unladen	m/s	0.15/0.22							
	5.8	Max. gradeability, laden/ unladen	%	0.16/0.12							
	5.10	Service brake		6/12							
Electric- engine				Electromagnetic							
	6.1	Drive motor rating S2 60min	kW	1.3							
	6.2	Lift motor rating at S3 4.5%	kW	2.2							
	6.3	Battery acc. to DIN 43531/35/36 A, B, C, no		3.0							
	6.4	Battery voltage, nominal capacity K5	V/Ah	B , 2PzS							
	6.5	Battery weighi	kg	24/210							
Additional data	6.6	Energy consumption acc: to VDI cycle	kWh/h	217							
	8.1	Type of drive control		2.5							
Additional data	8.1	Type of drive control		AC- speed control							
	8.4	Sound level at driver's ear acc. to EN 12053	dB(A)	69							

1) when operate the fork and pallet at the same time: Load Capacity / rated load (mast lift) is 1 t, Load Capacity / rated load (support arm lift) is 1 t.  
2) With foldable platform the following dimensions increase: l1 l2=+80mm/ Wa=+70mm/ Ast=+70mm

